

SWALO\_M06

13.12.2021

**Illuminated selector switch, maintained**



| General Data                 |  |
|------------------------------|--|
| Type reference               | SWALO_M06  |
| Description                  | Illuminated pre-assembled selector switch with M12 connector, 2 positions, maintained    |
| Approvals                    | CE, cURus, ENEC10, VDE, UKCA   |
| Contact type                 | 1 NC   |
| Degree of protection         | IP65 (in the front and on the rear)  |
| Connection type              | 4-pole M12 with PUR cable, A coded; length 150 cm; wires 4x 0,34 mm <sup>2</sup> (AWG22) |
| Contact material             | AgNi   |
| Max. storage temperature     | -40°C ... 80°C   |
| Max. operating temperature   | -25°C ... 70°C   |
| Mechanical life              | 30,000 switching cycles  |
| Electrical life (rated load) | 30,000 switching cycles at rated load  |
| Contact resistance NC        | < 300 mOhm (150 cm cable, AgNi contact block, new state)                                 |
| Bouncing time NC             | < 10ms   |
| Positive opening contact     | acc. to EN60947-5-1, appendix K  |

| Electrical data acc. to IEC/EN 60947-5-1 (VDE 0660 Sect. 200) |                   |                |
|---|-------------------|----------------|
|   | alternate current | direct current |
| Utilisation category  | AC15              | DC13           |
| Rated insulation voltage Ui                                   | 250 V             | 250 V          |
| Rated operating voltage Ue                                    | 35 V              | 35 V           |
| Rated operating current Ie                                    | 4 A               | 2 A            |
| Breaking capacity   | -                 | -              |
| Continuous thermal current                                    | 4 A               | -              |

| Technical Data - Lamp |                                      |
|-----------------------|--------------------------------------|
| Lamp socket           | none, with integrated 3 mm LED white |
| Max. lamp voltage     | 30 V AC/DC                           |
| Max. lamp output      | 14 mA (at 24 V DC)                   |



### Additional data

|                                   |                          |
|-----------------------------------|--------------------------|
| Mounting aperture                 | 22.3 mm                  |
| Tightening torque (mounting nut)  | 1.5 ... 1.9 Nm           |
| Tightening torque (M12-connector) | max. 0.4 Nm              |
| Mounting position                 | any                      |
| Standards                         | EN 60947-5-1, EN 61058-1 |
| Material group                    | I                        |
| Overvoltage category              | II                       |
| Pollution degree                  | 2                        |

### Note

O = NC contact

- 2-position illuminated selector switch, maintained

Selector switch:

- Shortron range
- silver-coloured front ring
- sealed on rear

Connecting cable:

- PUR cable with M12 connector straight, black
- integrated strain relief
- cable diameter: 4.7 mm
- length: 150± 5cm
- bending radius moving: 10 x cable diameter
- bending radius fixed: 5 x cable diameter

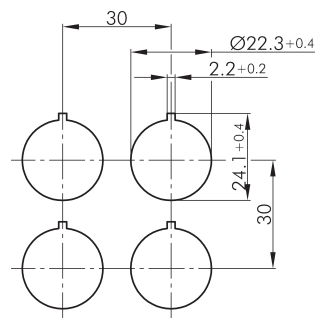
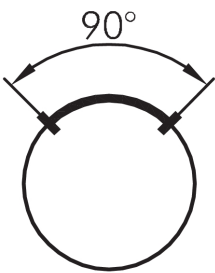
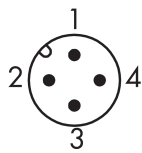
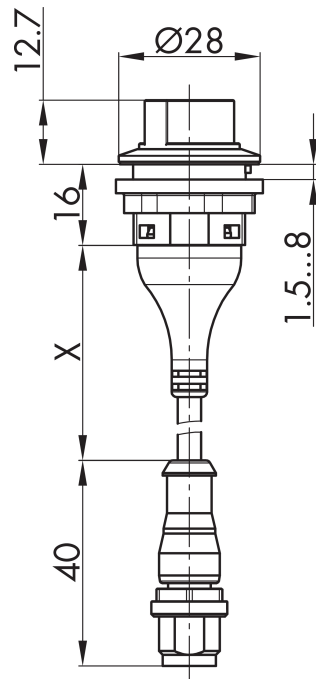
Pin assignment:

Pin 1 Pin 2 Pin 3 Pin 4  
NC(1) NC(1) LED - LED +

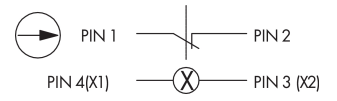
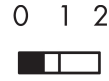
### Data acc. to UL508

|             |                             |
|-------------|-----------------------------|
| Ratings     | 24 V DC 2 A General Purpose |
| Lamp rating | 30 Vac/dc, 14 mA max        |





PIN 1/PIN 2



Legende:  
I= Schaltstellung >> Federrückzug

Legend:  
I= Switching position >= Spring return

Légende:  
I= Position de contact >= Rappel par ressort

