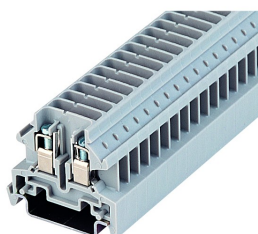


IKT4BL

21.04.2021


General Data

Type Reference	IKT4BL
Description	Separator terminal, screw connections
Approvals	CE, CSA, Lloyds, UKCA
Terminal type	Separator terminal
Terminal width	6 mm
Mounting method	top hat rail N35, EN60715 TH35
Connection type	screw connection, slotted screw
Thread size of screw connection	M3
Torque	0.8 Nm
Rated cross section	4 mm ²
Wire size (solid)	0.5 ... 4 mm ²
Wire size (stranded)	0.5 ... 4 mm ²
Rated voltage	500 V
Rated current	16 A
Max. storage temperature	-40°C ... 80°C
Max. operating temperature	-30°C ... 40°C

Photo

Data acc. to IEC 60947-7-1

Flammability class acc. to UL94	V2
Pollution degree	3
Overvoltage category	III
Material group	II
Insulating material	PA 6.6
Stripping length	7 mm

Data acc. to CSA C22.2 No 14

Wire size (solid)	12 AWG
Rated voltage	300 V



Rated current 25 A

Data acc. to CSA C22.2 No 14

Torque 0.8 Nm

Wire size (solid) 22-12 AWG

Rated voltage 300 V

Rated current 20 A

Data acc. to CSA C22.2 No 14

Wire size (solid) 22-12 AWG

Rated voltage 600 V

Rated current 20 A

