

BZOO

General Data

Type Reference:	BZOO
Description:	Twin Contact Block, separate plungers, positive opening contact
Approvals:	CCC, cCSAus, ENEC10, VDE, CE, NV, TÜV_Süd, UR, Zwangsöffnung
Nature of contact:	2NC
Protection class:	II (protective insulation)
Operation travel:	3 mm
Connection type:	Faston terminals 2.8x0.8 mm
Contact material:	AgNi
Max. storage temperature:	-50°C ... 85°C
Max. operating temperature:	-30°C ... 70°C
Mechanical life:	1 m switching cycles
Electrical life (rated load):	1m operations at rated load
Contact resistance NC:	< 20 mOhm (new state)
Min. current:	1 mA
Min. voltage:	5 V
Bouncing time NC:	< 10ms
Positive opening contact:	acc. to EN60947-5-1, appendix. K

Electrical data acc. to IEC/EN 60947-5-1 (VDE 0660 Sect. 200)

	alternate current	direct current
Utilisation category:	AC15 B300	DC13 Q300
Rated insulation voltage U_i :	250 V	300 V
Rated operating voltage U_e :	250 V	250V / 125V / 60V / 24V
Rated operating current I_e :	1.5A	0.2A / 0.4A / 1A / 2A
Breaking capacity:	10Ie	1,1Ie
Continuous thermal current:	6 A	

Electrical data acc. to IEC/EN 61058-1 (VDE 0630 Sect. 1)

Rated voltage U_e :	250 V~
Rated current I_e :	6(4) A

Electrical data acc. to IEC/EN 60947-5-1 (VDE 0660 Sect. 200) (additional test)

Utilisation category:	DC13
Rated operating voltage U_e :	12V
Rated operating current I_e :	6A
Breaking capacity:	1,1Ie

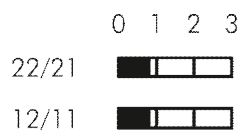
Electrical data acc. to IEC/EN 61058-1 (VDE 0630 Sect. 1) (additional test)

Rated voltage U_e :	12 V DC
Rated current I_e :	6[6] A
Electrical life (additional test):	50000

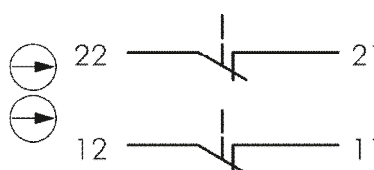
Photo



Operating travel diagram



Circuit diagram



- subject to alterations -