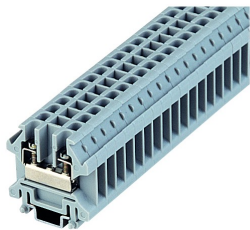


HK3

23.04.2021


General Data

Type Reference	HK3
Description	Feed-through terminal, screw connection
Approvals	CE, CSA, UKCA, UR
Terminal type	Terminal block
Terminal width	5.1 mm
Mounting method	top hat rail N15
Connection type	screw connection, slotted screw
Thread size of screw connection	M2.5
Torque	0.5 Nm
Rated cross section	2.5 mm ²
Wire size (solid)	0.5 ... 4 mm ²
Wire size (stranded)	0.5 ... 2.5 mm ²
Rated voltage	500 V
Rated current	25 A
Max. storage temperature	-40°C ... 80°C
Max. operating temperature	-30°C ... 40°C

Photo

Data acc. to IEC 60947-7-1

Flammability class acc. to UL94	V2
Pollution degree	3
Overvoltage category	III
Material group	II
Insulating material	PA 6.6
Stripping length	8 mm

Data acc. to CSA C22.2 No 14

Wire size (solid)	12 AWG
Rated voltage	300 V



Rated current 25 A

Data acc. to CSA C22.2 No 14

Torque 5 Lb In

Wire size (solid) 22-12 AWG

Rated voltage 300 V

Rated current 20 A

Data acc. to CSA C22.2 No 14

Torque 0.5 Nm

Wire size (solid) 18-12 AWG

Rated voltage 300 V

Rated current 25 A

