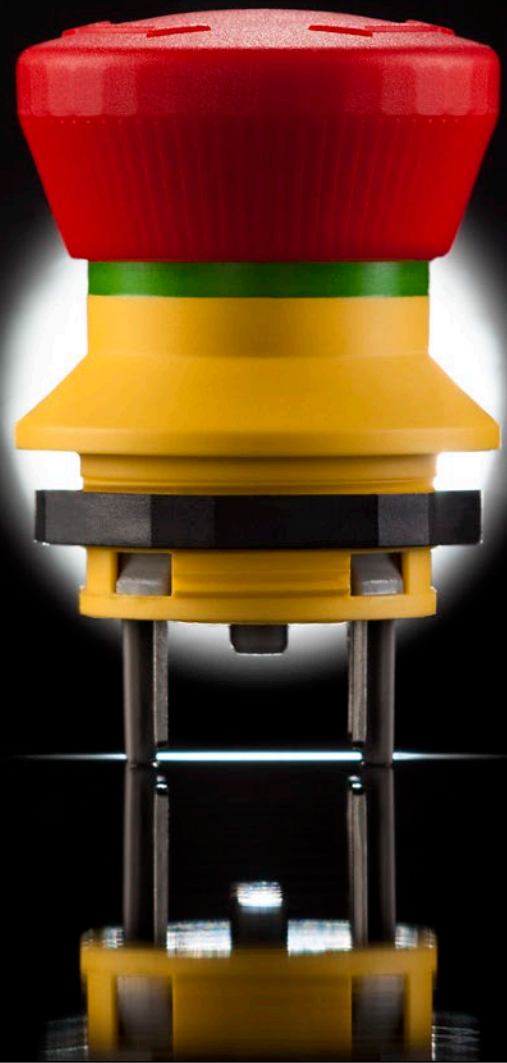


# Supplier Self Assessment

June 3, 2020 – Version 1.0



Georg Schlegel GmbH & Co. KG  
Kapellenweg 4  
88525 Duermentingen  
einkauf@schlegel.biz  
www.schlegel.biz



# SUPPLIER SELF-ASSESSMENT



Dear Sir or Madam,

We require your information for the "Supplier Self-Assessment" in digital form.

Please send us the signed PDF file to the following email address:

[einkauf@schlegel.biz](mailto:einkauf@schlegel.biz)

We thank you for your help!

Yours sincerely,

Purchasing Team

Georg Schlegel GmbH & Co.KG

Issuer: \_\_\_\_\_

Funktion: \_\_\_\_\_

Date: \_\_\_\_\_

Company stamp / Signature:



# SUPPLIER SELF-ASSESSMENT



## 1. General data

Company name:

---

Street:

---

ZIP code, city:

---

Country:

---

Phone:

---

Fax:

---

Mail:

---

Website:

---

VAT identification number:

---

Year of foundation:

---

Headquarters:

---

Manufacturing sites:

---

Development sites:

---

Total number of employees:

---

Number of employees for production:

---

Number of employees for development:

---

Number of employees for quality assurance:

---

Reference customers:

---

Industries you supply:

---

Product lines:

---

Core competences:

---



# SUPPLIER SELF-ASSESSMENT



## 2. Bank details

Name of bank: \_\_\_\_\_

IBAN: \_\_\_\_\_

BIC: \_\_\_\_\_

## 3. Contact person (phone / mail):

Field	Last name	Phone	Mail
Management			
Sales			
R&D			
Production			
Quality Assurance			
Product Management			

## 4. Turnover

	Turnover in million	Share automotive industry in %
Last year		
Second to last year		
Third to last year		
Forth to last year		
Fifth to last year		

## 5. Quality management

Certification acc. to ISO9001: \_\_\_\_\_  YES  NO

Certification acc. to ISO14001: \_\_\_\_\_  YES  NO

Others: \_\_\_\_\_

Please provide copies of the certificates!

## 6. Environmental substances / Product ingredients - Conformities:

Are your products RoHS compliant? \_\_\_\_\_  YES  NO

Are your products REACH compliant? \_\_\_\_\_  YES  NO

Do your products contain conflict minerals (Dodd-Frank Act)? \_\_\_\_\_  YES  NO

Others: \_\_\_\_\_



# SUPPLIER SELF-ASSESSMENT



## 7. Questions

Do you evaluate suppliers?  YES  NO

Are supplier audits carried out?  YES  NO

Are suppliers informed about product changes?  YES  NO

Do you check incoming materials?  YES  NO

Is it ensured that up-to-date process instructions/manuals are available in production?  YES  NO

Are test procedures defined in production?  YES  NO

Is there a process monitoring/control (e.g. SPC)?  YES  NO

Are all test and measuring equipments systematically labelled?  YES  NO

Do you have a test equipment monitoring system?  YES  NO

Are the test equipments checked/calibrated at regular intervals?  YES  NO

Are parts tested before delivery?  YES  NO

Do you work with initial sample inspection reports?  YES  NO

Does your company conduct internal audits?  YES  NO

Is electronic data interchange (EDI) possible?  YES  NO

How much storage space in m<sup>2</sup> do you have available?

How much production space in m<sup>2</sup> do you have available?

How do you ensure your material supply?

